



Imperial Wharf, The Boulevard
Fulham SW6

GARTONJONES.COM



Imperial Wharf, The Boulevard Fulham, SW6

£850 Per Week

A 2 double bedroom apartment 1044sqft (97sqm) located on the 5th floor (with lift) of this prestigious riverside development in the heart of Imperial Wharf. This beautifully presented property benefits from an open plan reception room, integrated kitchen with a selection of Miele and Gaggenau appliances, there is access to a large private terrace, ideal for entertaining but also enjoying partial views of the River Thames. Additionally, there are 2 luxury bathrooms (1 en-suite), wood flooring, comfort cooling and storage including a walk in wardrobe to the master bedroom and built in wardrobes to bedroom 2. Located on the North bank of the Thames adjacent to Chelsea Harbour and Chelsea Creek, Imperial Wharf is a luxury riverside complex by developers St George PLC benefitting from 24-hour concierge, residents' gym, landscaped gardens and a range of cafés and other shopping facilities. Imperial Wharf train station is located on site and provides quick links to Clapham Junction, Shepherds Bush and West Brompton. The River Bus Service at Chelsea Harbour Pier provides transport to Putney and Blackfriars Millennium Pier.

12 Month Minimum Term
5 Week Security Deposit
Council Tax — Hammersmith & Fulham — Band G

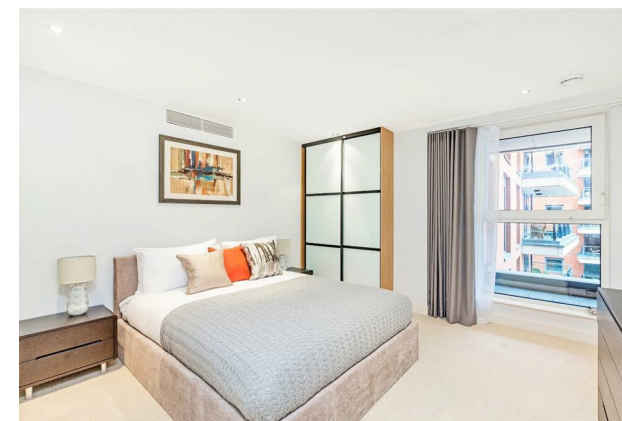
EPC — C (75)

- 1044sq.ft (97sq.m)
- 2 Double Bedrooms
- 2 Bathrooms (1 En-Suite)
- 5th Floor
- Kitchen with Miele & Gaggenau Integrated Appliances
- Large Private Terrace with Partial River
- Open Plan Reception Room
- 24 Hour Concierge
- Easy Reach Of Imperial Wharf Overground Station
- EPC Rating C (75)

GARTON JONES.COM

11 Park Street
Chelsea Creek
London
SW6 2FS

Lettings:
+44 (0) 20 7824 7090
paul@gartonjones.com
www.gartonjones.com



Fountain House

Approximate Gross Internal Area
1044 sq ft / 97 sq m

